

**CONSTRUCTION NOTES**  
 All final drainage resolutions to be provided by relevant appropriately qualified contractors pursuant to Australian Standards, and in response to the conditions below, work commences.  
 All active final finish levels subject to on site evaluation by appropriately qualified personnel.  
 This concept master plan indicates utility in terms of aesthetic intent. Draining means will be assessed after construction purposes.  
 Dimensions and survey data must be confirmed on the site via structures and property boundaries before the commencement of works.  
 All work to be undertaken in accordance with the conditions of works, structures and otherwise in accordance with Australian Standards and the relevant municipal council's.  
 All work related to the implementation of this plan must be undertaken only by appropriately qualified and licensed trades professionals.  
 Outdoor Edge Design prior evaluation on quality finish & project delivery and take no responsibility for work completed by unauthorised third party construction personnel.

Pool is ample proportion to accommodate sunbathers. Timber decking in quality hardwoods provides a pleasant surface to walk on bordered harmonising with the Old Red Brick and Blue Stone. Fragrant Citrus or highly fragrant Ficus Standards at each side of self-retaining pool.  
 Pool in symmetry with residence and surrounding pools to be built to first floor level. Blue Stone Bull-Nose granite edging with another facing the other way to coping to the low retaining wall.

Bench in shade of Michelia daffodora views swimming Pool through terracing glass Pool Safety Fence. A quiet place to enjoy a book or newspaper on a warm afternoon.

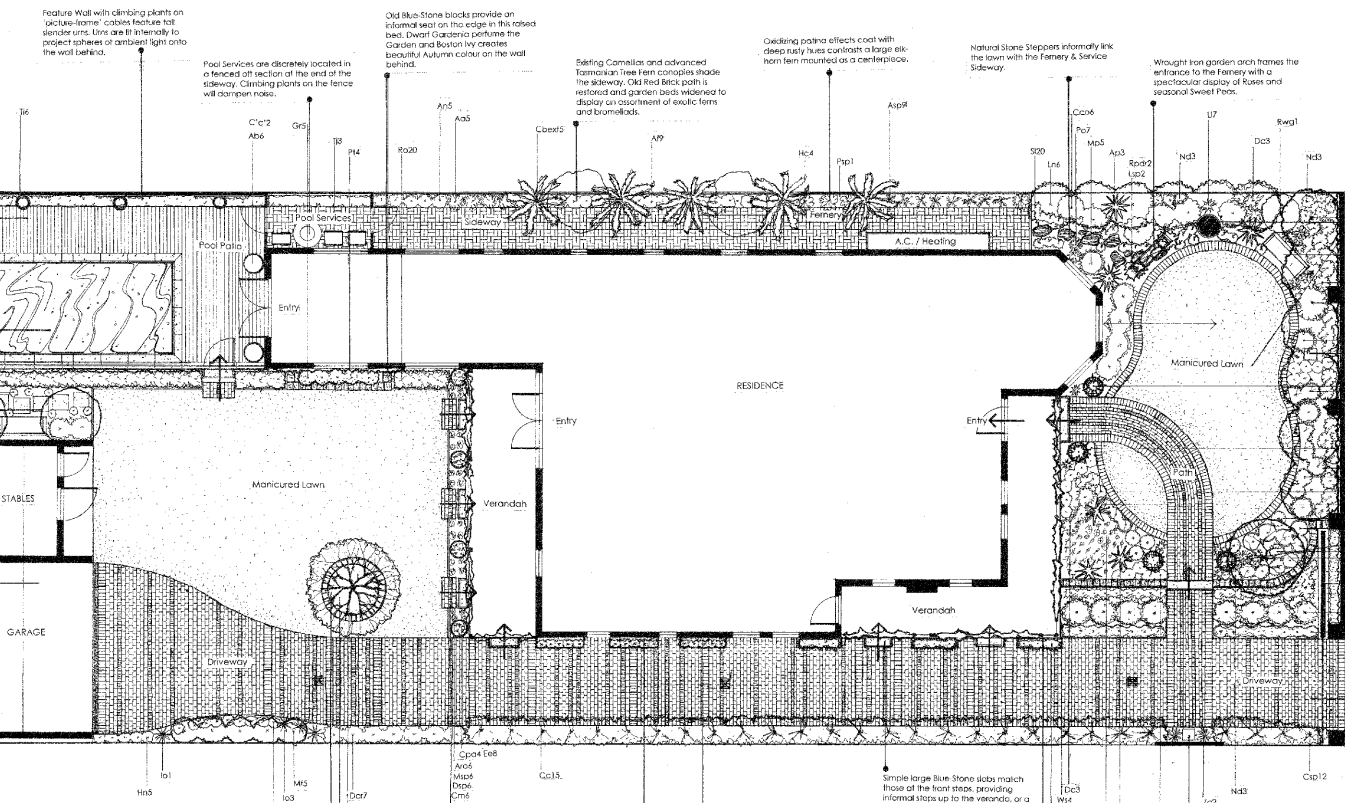
Old Stables & Garage moved, providing better proportioned space for lawn area and swimming Pool.

Old Stables & Garage moved, providing better proportioned space for lawn area and swimming Pool.

**LANDSCAPE CHARACTER NOTES**

This Landscape Master Plan has been designed to complement the Victorian Era Red Brick residence, and provide a template to guide the ongoing development of future garden areas. Plant species have been selected to provide a year round display of colour and fragrance. A whole site water management strategy will be integrated with Storm Cms of the garden development. Under the lawn lawn, twenty-two thousand litres of water stored in tanks will provide ample irrigation capacity for the traditional plant selections.  
 Gardens of the Victorian Era were long garden featuring vast quantities of specific species from around the world. The unique garden balances the intrigue and volatility of great historical gardens with high quality contemporary features. This results in a practical, low maintenance landscape, open to modern family living... enjoy!

Code	Schedule of Plantings	Common Name	Flora Characteristics	QTY
Aa	Asplenium adnigrum 'holobol'	Bird's Nest Fern	20cm	5
Ab	Asplenium nidus	Rock Fern	20cm	5
Ac	Asplenium nidus	Rock Fern	20cm	5
Ad	Asplenium nidus	Rock Fern	20cm	5
...	...	...	...	...



The central bed extends informal seating opportunity with Blue Stone block seating mass planted seasonal bulbs, cyclamen, Lupine and Gardenia.  
 Silver foliage plants bring light into the shady driveway during the day and reflect light at night, denoting the edge of the driveway under headlights.  
 At the front verandah, tensioned cable provides a framework upon which the Wisteria will be trained, creating lift in the wrought iron. In Spring and Summer, the flowers and foliage cool the verandah, then in winter the leaves drop, letting maximum sunlight in, and showing off the wrought iron post-work.  
 An elegant sculpture sits upon Old Red Brick, dark under an arch in the hedge. A garden mirror on the wall behind the circular 'fountain' leaf effect with the impression of another garden room in the space beyond the hedge.

Code	Plant Name	Flora Characteristics	QTY
10c	Neochamaecostyle	25cm	4
10d	Neochamaecostyle	25cm	4
10e	Neochamaecostyle	25cm	4
10f	Neochamaecostyle	25cm	4
10g	Neochamaecostyle	25cm	4
10h	Neochamaecostyle	25cm	4
10i	Neochamaecostyle	25cm	4
10j	Neochamaecostyle	25cm	4
10k	Neochamaecostyle	25cm	4
10l	Neochamaecostyle	25cm	4
10m	Neochamaecostyle	25cm	4
10n	Neochamaecostyle	25cm	4
10o	Neochamaecostyle	25cm	4
10p	Neochamaecostyle	25cm	4
10q	Neochamaecostyle	25cm	4
10r	Neochamaecostyle	25cm	4
10s	Neochamaecostyle	25cm	4
10t	Neochamaecostyle	25cm	4
10u	Neochamaecostyle	25cm	4
10v	Neochamaecostyle	25cm	4
10w	Neochamaecostyle	25cm	4
10x	Neochamaecostyle	25cm	4
10y	Neochamaecostyle	25cm	4
10z	Neochamaecostyle	25cm	4

**Material / Graphic Key**

- Manicured Lawn
- Climbing Plant on Cable
- Swimming Pool
- Timber Decking
- Blue Stone Slab Step
- Step Up / Entry
- T. Fine Edging Strip
- Old Red Brick Driveway
- Natural Random Stone Stripper
- Structural Wall or Screen
- Old Red Brick on Sand Base
- Old Red Brick Stepper
- Old Red Brick Wall
- Old Red Brick Header Course
- Gothic Drain
- Francesca Glass Balustrade
- Blue Stone Stripper 300x300
- Drainage Pipe
- Blue Stone Bull-Nose
- Garden Bench

**OUTDOOR EDGE DESIGN & CONSTRUCTION**  
 756 WILSON ROAD, MCGILLFIELD, VICTORIA 3186  
**LANDSCAPE DESIGN - CONCEPT MASTER PLAN**  
 BRIGHTON, VICTORIA 3187

**LANDSCAPE ARCHITECT** - Shane Clifford - Ph. 0432 181646  
**CONSTRUCTION MANAGER** - Mark Basile - Ph. 0412 670874

SCALE 1:75 DATE 12.04.2007 PROJECT # 0706 NORTH